

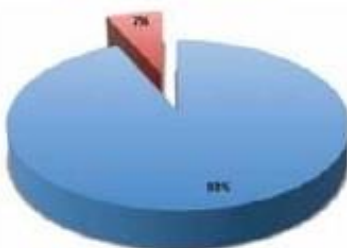


## February 2015 - Housing Questionnaire Results

The Housing Questionnaire was completed by 46% of residents. The Steering Committee has now started to draft objectives and policies based on responses received. Here are some of the key results.

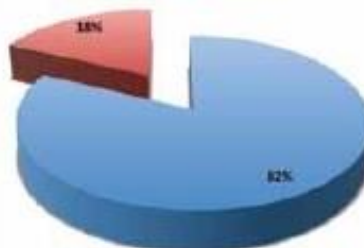
### Neighbourhood Plan Vision

agree disagree



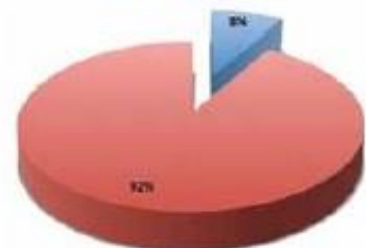
### Do you think that Audlem should have more affordable housing built?

agree disagree



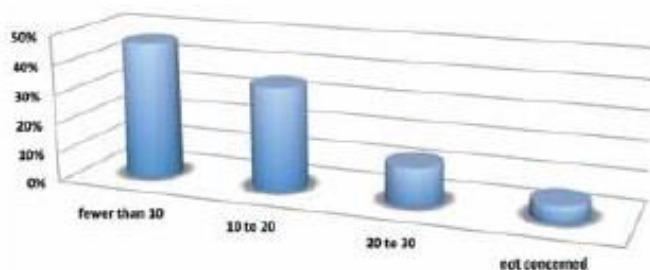
### Should additional developments be on greenfield sites?

yes no



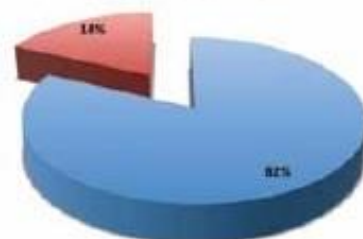
Responses also stated that at least 36% of new developments should be Affordable

### What size would you like to see any development site limited to?



### We should only have to provide around 80-100 houses in the period 2010 - 2030

agree disagree



In response to the question "Should required development be spread through the village?", 84% of responses agreed.

Three concerns most frequently raised were traffic, parking and the adequacy (size) of the medical practice. Other frequently mentioned comments related to the village infrastructure, footpaths and the adequacy (size) of schools.

### Public Consultation Workshop

There will be a Drop-In Workshop on Thursday 12 March in the Public Hall from 2pm until 7.30pm when all residents, local businesses and landowners will be invited to drop in to:

- review the results of the questionnaire in more detail
- discuss and hopefully approve the Neighbourhood Plan objectives and policies currently being drafted to reflect the results

### Business Questionnaire

It is clear that residents wish to support employment opportunities and businesses, together with improving shops, restaurants and facilities in the village centre. All businesses will shortly be sent a brief questionnaire to ascertain their views and concerns.